

1 WE HAVE A COMPLEX PROBLEM.

Our population over 85 years old is most in need of aged care services



**85 YEAR OLD +
179% GROWTH
2021 - 2041**



**24,000 NEW
AGED CARE WORKERS
NEEDED BY 2031**

2 THERE IS AN INNOVATIVE SOLUTION.

Led by industry, the Western Australian Centre for Aged Care Innovation (Training + Workforce) will develop and implement evidence based solutions to address the training and workforce issues currently restraining the sector, with the aim to build a skilled workforce to meet the current and future demand.



WESTERN
AUSTRALIAN
CENTRE FOR
AGED CARE
INNOVATION

TRAINING +
WORKFORCE

3 RESULTING IN ENTICING BENEFITS.



**\$20.8 MILLION
INVESTMENT RETURNS
\$6.8 BILLION BENEFIT - BCR 3.7**



**9,016 NEW JOBS
DIRECTLY CREATED**



**REDUCED PRESSURE
ON HOSPITALS**



**INCREASED QUALITY OF
LIFE FOR OLDER PEOPLE**



**REDUCED WAIT TIMES
FOR AGED CARE**



**AGED CARE FACILITIES
DEVELOPED SOONER**

WESTERN AUSTRALIAN CENTRE FOR AGED CARE INNOVATION

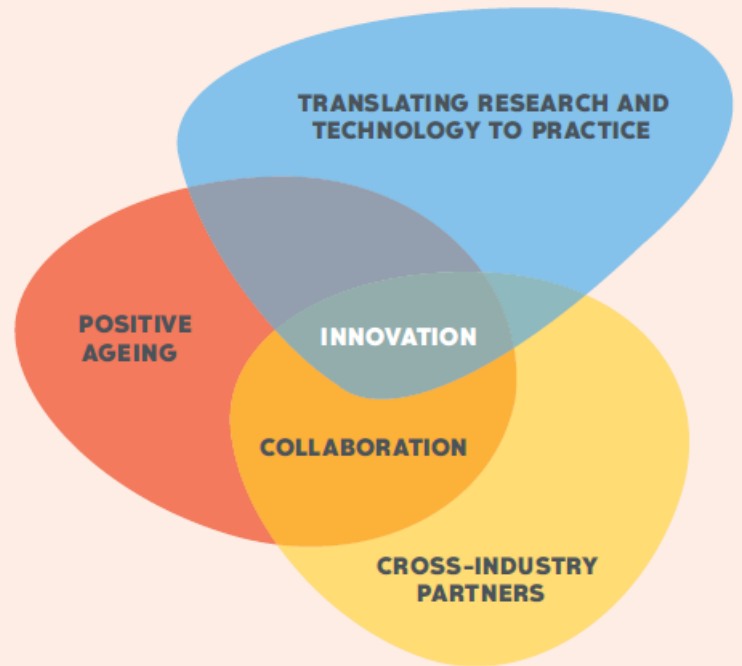
Training + Workforce

INNOVATION - develop, implement & scale

TRAINING - industry led curriculum design & advocacy

WORKFORCE - attraction, recruitment & retention

MEANINGFUL AGEING - proactive & preventative health strategies



The Western Australian Centre for Aged Care Innovation (Training + Workforce) is an **industry-led initiative** involving aged care and health providers, universities, the VET sector, peak bodies, and industry experts, to be facilitated by the proponent Aged Care Research & Industry Innovation Australia (ARIIA). ARIIA is an independent NFP established to lead innovation and research to improve workforce capability and the quality of aged care.

The business case was commissioned by the Peel Development Commission and the City of Mandurah as part of the **Transform Mandurah** initiative.



WHY MANDURAH

The impacts of an ageing population are already evident in Mandurah where 32% of residents are aged over 60 years old.

Mandurah's population driven demand for aged care services, together with its single regional hospital, presents a distinct advantage to test and evaluate innovative training, workforce, and service delivery models.